

LANYARDS

checkfall
SAFETY BY DESIGN



CHECKMATE



LET'S INNOVATE

Award Winning Lifting & Height Safety Equipment Since 1979
Designed and Built in Great Britain by Great Britons

sales@checkmateuk.com
www.checkmateuk.com

Checkmate Group

Checkmate is fast becoming one of the most admired designers and manufacturers of height safety equipment in the World. Now into its fourth decade, Checkmate is still very much a family business with four key trading areas: **Safety, Lifting, Flexible Engineering** and **Energy**.

Our entrepreneurial style of management allows each business to run as a standalone entity but it has the support, security and depth of the entire Checkmate Group. This culture inspires smart thinking, pride and value within our team.

We continue to be lead where others follow or imitate and this has been recognised with the honour of the Queen's Award for Innovation, Checkmate's third Queen's Award in recent years.

DESIGN | BUILD | INSTALL | SERVICE | TRAIN

LANYARDS

checkfall

SAFETY BY DESIGN

CheckFall has three types of lanyard to cover all manner of applications and user preference. Each one has its own unique benefits so it is important that care is taken when choosing the correct device.

PAL

Pro Absorber Lanyard plus elasticated option

- ▶ Uses kinetic webbing to progressively absorb energy. Peak forces are typically 3.5kN. Min length 1.3m Max 2m.

SAL

Shock Absorber Lanyard plus elasticated option

- ▶ Traditional tear webbing design. Easy to inspect after a fall with peak loads reaching 4kN. Min length 0.5m Max 2m.

RAL

Rope Absorber Lanyard

- ▶ Utilises the same tear webbing pack as SAL but has the advantage of using 11mm kernmantle rope that can be choked back on itself via an alloy ring. Peak loads of 4kN. Min length 0.5m Max 2m.

DESIGN | BUILD | INSTALL | SERVICE | TRAIN



CHECKMATE

LET'S INNOVATE

Award Winning Lifting & Height Safety Equipment Since 1979
Designed and Built in Great Britain by Great Britons

sales@checkmateuk.com
www.checkmateuk.com

LANYARDS

checkfall

SAFETY BY DESIGN

There is a choice of connectors for all three devices but a body connection is supplied with a Delta Link as standard.



- ▶ **PPEH07**
Double Action Snap Hook



- ▶ **PPEH03**
Alloy Scaffold Hook



- ▶ **PPEH05**
Alloy Karabiner



- ▶ **PPEH06**
Steel Scaffold Hook

DESIGN | BUILD | INSTALL | SERVICE | TRAIN

LANYARDS

checkfall
PAL SAFETY BY DESIGN



PAL2

Pro Absorber Lanyard

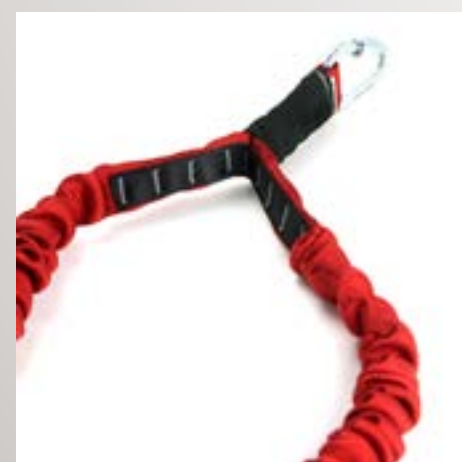
Our lightest and most compact lanyard which absorbs through a unique displacement core with the outer cover acting as a secondary back up and protection, so no shock absorbing pouch is required. Due to the energy management, the lanyard does not suffer from high peak loads at deployment, instead it increases progressively. This reduces impact forces on the body.

- ▶ 2m single leg, can be reduced to 1.3m
- ▶ Delta link to body
- ▶ Shock load indicator via outer cover and indicator flag
- ▶ Available 1.3m to 2m.

Standards: **EN355** & **EN354**



Retractable
Label Sheave



Twin Leg
Reinforcing



Deployment
Indicator

DESIGN | BUILD | INSTALL | SERVICE | TRAIN

LANYARDS

checkfall
PAL SAFETY BY DESIGN



PAL3

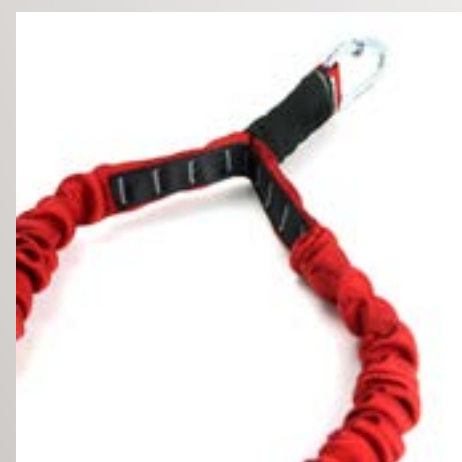
Pro Absorber Off-Set Twin Leg Lanyard

Off-Set Twin Leg Lanyard with the same features as PAL2 but has the addition of a strengthening webbing to stop stitch peel in the event users fall with anchors widely spaced apart. It also stops connectors from sliding. Extra care should be taken when working and users are advised not to leave both devices connected at the same time.

- ▶ 1 x 2m leg and 1 x 1.3m leg
- ▶ Shock load indicator via outer cover and indicator flag
- ▶ Extra strengthening webbing under Y connection
- ▶ UV resistant polyester webbing
- ▶ Contrast colour stitch for easy inspection



Retractable
Label Sheave



Twin Leg
Reinforcing



Deployment
Indicator

Standards: **EN355** & **EN354**

DESIGN | BUILD | INSTALL | SERVICE | TRAIN

LANYARDS

checkfall
PAL SAFETY BY DESIGN



PAL4

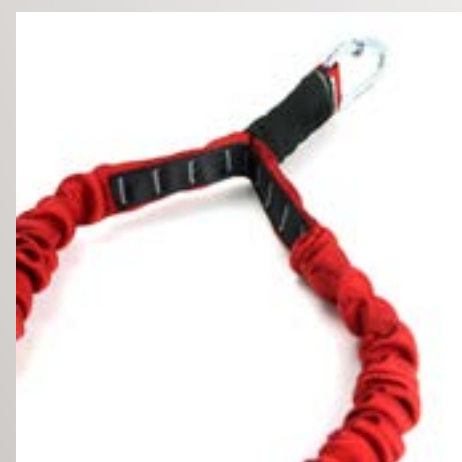
Pro Absorber Equal Twin Leg Lanyard

Equal Twin Leg Lanyard with the same features as PAL2 but has the addition of a strengthening webbing to stop stitch peel in the event users fall with anchors widely spaced apart. It also stops connectors from sliding. Extra care should be taken when working and users are advised not to leave both devices connected at the same time. This reduces the possibility of spike loads.

- ▶ Twin legs 2m can be reduced down to 1.3m each
- ▶ Shock load indicator via outer cover and indicator flag
- ▶ Extra strengthening webbing under Y connection
- ▶ UV resistant polyester webbing



Retractable
Label Sheave



Twin Leg
Reinforcing



Deployment
Indicator

Standards: **EN355** & **EN354**

DESIGN | BUILD | INSTALL | SERVICE | TRAIN

LANYARDS

checkfall
SAL SAFETY BY DESIGN

SAL2

Shock Absorber Lanyard

Designed using traditional tear webbing to absorb energy. The tear pack is constructed with a continuous back up webbing so if the tear pack failed it will hit the back up webbing. Typical peak loads during a fall factor 2 only reach 4kN on peak arrest. Available in a range of lengths from 0.5m to 2m each leg and a choice of connectors.

- ▶ 2m single leg, can be reduced to 0.5 with shock pack only
- ▶ Tear webbing energy absorber, easy to inspect after a fall
- ▶ Label encapsulated by clear heat shrink to protect
- ▶ UV resistant polyester webbing with continuous back up webbing

Standards: **EN355** & **EN354**



Tear Webbing Shock Pack



Elasticated Option



Deployment Indicator

DESIGN | BUILD | INSTALL | SERVICE | TRAIN

LANYARDS

checkfall
SAL SAFETY BY DESIGN



SAL3

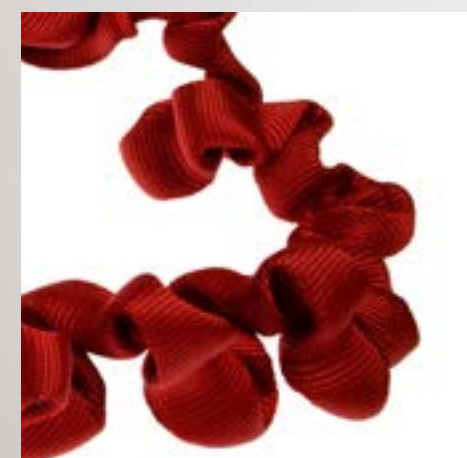
Shock Absorber Off-Set Twin Leg Lanyard

Off-Set 'Y' Type variant designed using traditional tear webbing to absorb energy. The tear pack is constructed with a continuous back up webbing so if the tear pack failed it will hit the back up webbing. Available in a range of lengths from 0.5m to 2m each leg and a choice of connectors.

- ▶ 1 x 2m leg and 1 x 1.3m leg
- ▶ Tear webbing energy absorber, easy to inspect after a fall
- ▶ Label encapsulated by clear heat shrink to protect
- ▶ Label sheave protects from damage and wear
- ▶ UV resistant polyester webbing with continuous back up webbing



Tear Webbing Shock Pack



Elasticated Option



Deployment Indicator

Standards: **EN355** & **EN354**

DESIGN | BUILD | INSTALL | SERVICE | TRAIN

LANYARDS

checkfall
SAL SAFETY BY DESIGN



SAL4

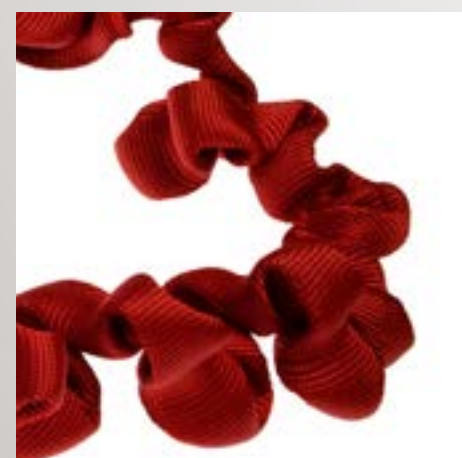
Shock Absorber Equal Twin Leg Lanyard

Equal 'Y' Type variant designed using traditional tear webbing to absorb energy. The tear pack is constructed with a continuous back up webbing so if the tear pack failed it will hit the back up webbing. Available in a range of lengths from 0.5m to 2m each leg and a choice of connectors.

- ▶ Twin legs 2m can be reduced down to 1.3m each
- ▶ Tear webbing energy absorber, easy to inspect after a fall
- ▶ Label encapsulated by clear heat shrink to protect
- ▶ Label sheave protects from damage and wear
- ▶ UV resistant polyester webbing with continuous back up webbing



Tear Webbing Shock Pack



Elasticated Option



Deployment Indicator

Standards: **EN355** & **EN354**

DESIGN | BUILD | INSTALL | SERVICE | TRAIN

LANYARDS

checkfall
SAFETY BY DESIGN



CHECKMATE



LET'S INNOVATE

Award Winning Lifting & Height Safety Equipment Since 1979
Designed and Built in Great Britain by Great Britons

sales@checkmateuk.com
www.checkmateuk.com